

One Day • One Way • 160 Miles
RAIN
Ride Across INdiana

RAIN 2024
Personal Support Vehicle (PSV) Guide

Revised 7/15/24

The following tips and instructions are provided for Personal Support Vehicle (PSV), or SAG, operators to assist in navigation from Terre Haute to Richmond during the course of the RAIN event. These instructions are organized chronologically. [RAIN 2024 PSV Map](#) shows the entire route the PSV should follow from Terre Haute to Richmond. It is suggested that you print or have an electronic version of this guide and map in your PSV during the event. You may pull over to the side of the road and refer to these resources as needed. Detailed descriptions and additional maps of the RAIN Start and the RAIN Finish are provided below.

A shared Google Map showing both the Rider and PSV routes is available here:



Note on GPS Devices - The PSV route shown here minimizes conflict with riders and is the preferred route to follow. It is therefore recommended that you do not use automotive GPS devices for PSV navigation during RAIN. An alternative procedure is to upload the shared Google Map for viewing on a smartphone. You cannot navigate this map (i.e. get turn-by-turn directions), but you can see both the rider route, the recommended PSV route, and your current position using the enabled GPS receiver in your smart phone.

RAIN Start – Arrive at St. Mary-of-the-Woods College (SMWC) early and drop your rider off or park in designated areas. [See RAIN Start Map](#). These areas are close to rest room facilities and the RAIN Starting Line. Please do not attempt to access SWMC from St Mary’s Road. This access is blocked by bikes at the RAIN starting line. Do not drop your rider off or park along US 150 near St. Mary’s Road. This creates visibility problems and traffic congestion at the Start, and is frowned upon by on-site law enforcement. Use the North Entrance to SMWC, not the Main Entrance on St. Mary’s Road. As shown on the map, one-way traffic will be maintained along campus roadways to facilitate smooth traffic flow prior to the start of the event.

After the start of RAIN, please exit SMWC north on US 150 along the designed PSV route. See [RAIN 2023 PSV Map](#). Do not follow your rider on the route through Terre Haute as this creates added congestion on city streets. The PSV route is south on SR 63 and US 41 (Third Street) to I-70. Following this route, you will pass the large number of motor lodges near the US 41 / I-70 interchange. If you are staying in this area, consider dropping your rider off at SMWC for the 7:00 RAIN start and then returning to your lodging for a leisurely checkout. You will have plenty of time to meet your rider at Rest Stop 1.

From the US 41 interchange, follow I-70 east 34 miles east to the US 231 interchange. Exit north on US 231 and proceed north 3.5 miles to Rest Stop 1 on the right side of the road.

Rest Stop 1 – Rider Mile 38 South Putnam High School. This stop is located at the US 40 and US 231 intersection. Ample parking is available in the school parking lots. PSVs and Riders will enter and exit Stop 1 at different locations. PSVs will enter Rest Stop 1 from US 231. See [RAIN 2024 PSV Map](#). Follow signs to the parking lots on school property where you may meet your rider. Please do not park along the US 40 or US 231 roadway or shoulders near the rest stop as this may obstruct traffic and rider visibility. PSVs may follow US 40 east from Rest Stop 1 to Plainfield and Rest Stop 2.

Rest Stop 2 – Rider Mile 63, Plainfield Middle School. PSVs and Riders will approach Rest Stop 2 along different routes See [RAIN 2024 PSV Map](#). In Plainfield, PSVs will continue east on US 40 past the signed rider turnoff at Vestal Road. PSVs will turn right on Simmons Street and follow the signed route to Rest Stop 2 along Simmons and Stafford Streets to enter the stop from the east. Ample parking is available in the school parking lots. Park only in the designated areas on school property. You may meet your rider at this point. Exit Rest Stop 2 in the direction you came and follow the RAIN PSV directional signs back to US 40. PSVs ARE NOT PERMITTED ON THE RAIN ROUTE EAST OF PLAINFIELD due to the narrow nature of the rural roadways.

Lunch Stop – Rider Mile 92, Franklin Township Schools. From Plainfield, follow US 40 east to I-465. On 7/12/24 I-465 was closed between I-65 and I-74 on the southeast side of Indianapolis for repair work. It is anticipated to be closed for the RAIN Ride. To reach the Lunch Stop, exit I-465 at I-65 and follow I-65 south to the Southport Road exit. Take Southport Road east to Franklin Road, turn left on Franklin Road and proceed north to the Lunch Stop. See [RAIN 2024 PSV Map](#). You may meet your rider for lunch at this point. Ample parking is available in the school parking lots. Park only in the designated areas on school property. Do not park along Edgewood Avenue north of the school, or Franklin Road west of the school.

Exit the Lunch Stop in the direction you came and follow the RAIN PSV directional signs south along Franklin Road, east along Indian Creek Road, and north along Acton Road to I-74. Follow I-74 west to Post Road and exit onto Post Road. Proceed north on Post Road back north to US 40. Proceed east on US 40 to Greenfield. Do not follow the bikes east along Edgewood Avenue.

Rest Stop 4 – Rider Mile 113, City of Greenfield Brandywine Park. PSVs ARE NOT ALLOWED AT STOP 4 DUE TO LIMITED PARKING AND THE NARROW COUNTY ROADS IN THE AREA. The RAIN Route rejoins US 40 at Morristown Road on the east side of Greenfield. This is shortly after riders have left Rest Stop 4, and you may meet your rider anywhere along US 40 at this point. Please meet your rider after he/she returns to US 40 east of Greenfield. Then, follow US 40 east to Dunreith.

Rest Stop 5 – Rider Mile 131, Dunreith Fire Station. The Dunreith Fire Station rest stop is one-half mile east of the SR 3 / US 40 junction. Limited parking is available at the fire station. Please park in the lot before the fire station, or proceed past the fire station and park in the lot

east of the fire station, or along the shoulder of US 40. Follow US 40 east from Dunreith to the RAIN Finish Line at Earlham College.

RAIN Finish – Rider Mile 159, Earlham College, Richmond. Riders will be directed to the RAIN Finish Line located at the Main Entrance to Earlham College. PSVs will continue past the rider turn off, turn right onto College Avenue, and turn right again onto Southwest D Street into the Earlham College Campus. Ample parking is available on campus close to the finish line. See [RAIN Finish Map](#).

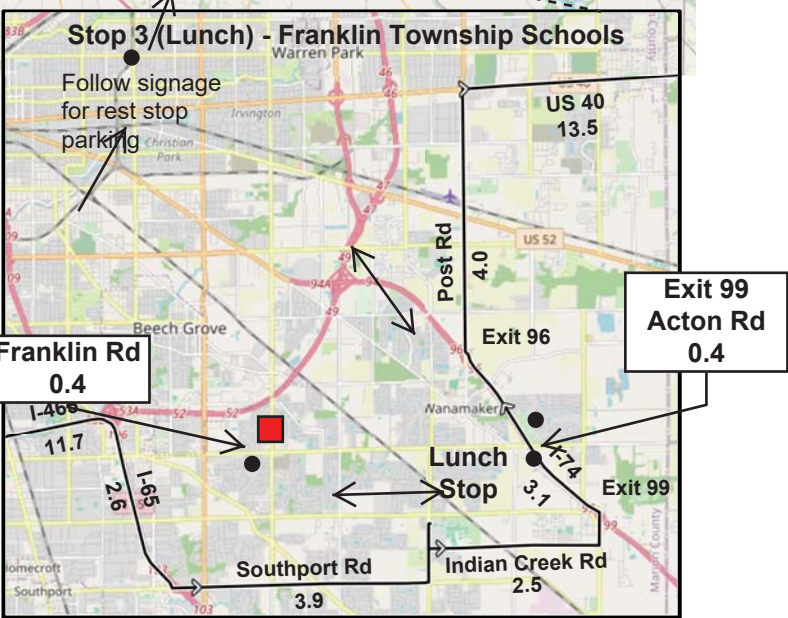
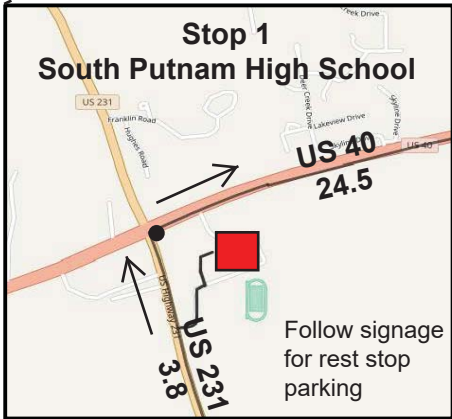
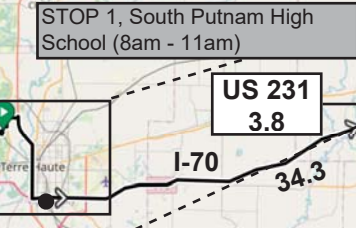
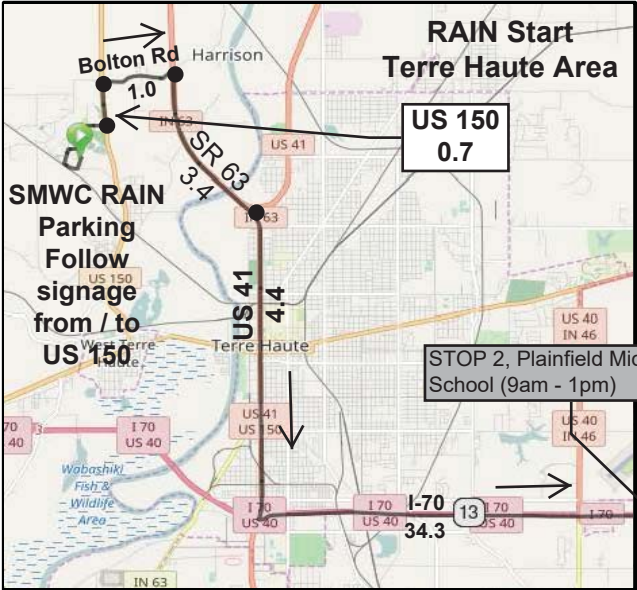
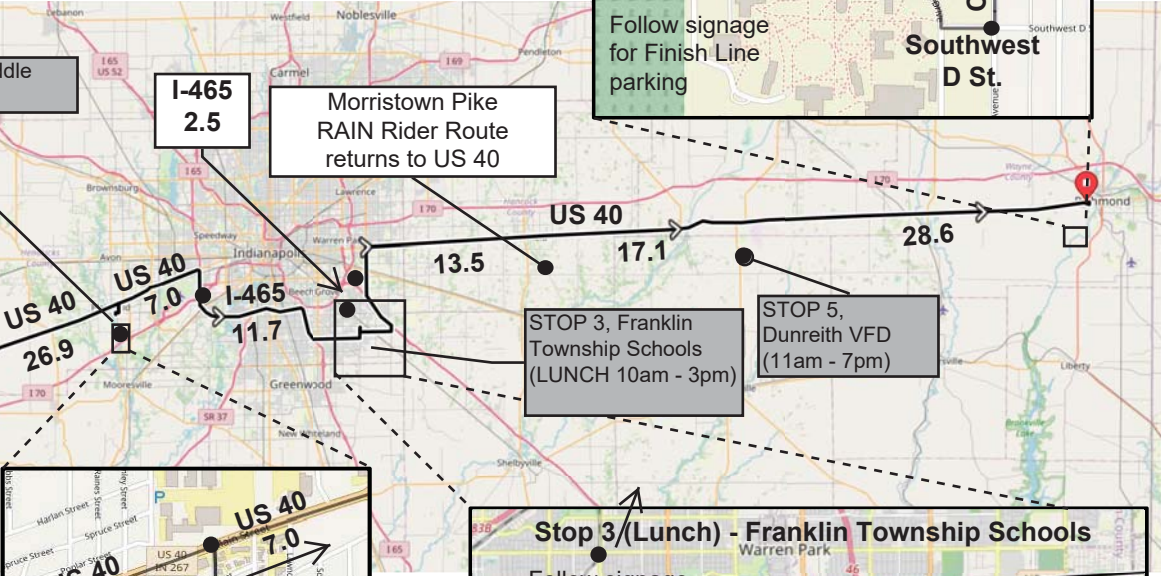
RAIN 2024 Personal Support Vehicle (PSV) Map

Revised 7/15/24

Explanation

- US 40
 - 13.5
- Road Designation
Distance (miles)

Main Map



RAIN 2024 - Start Line PSV Route



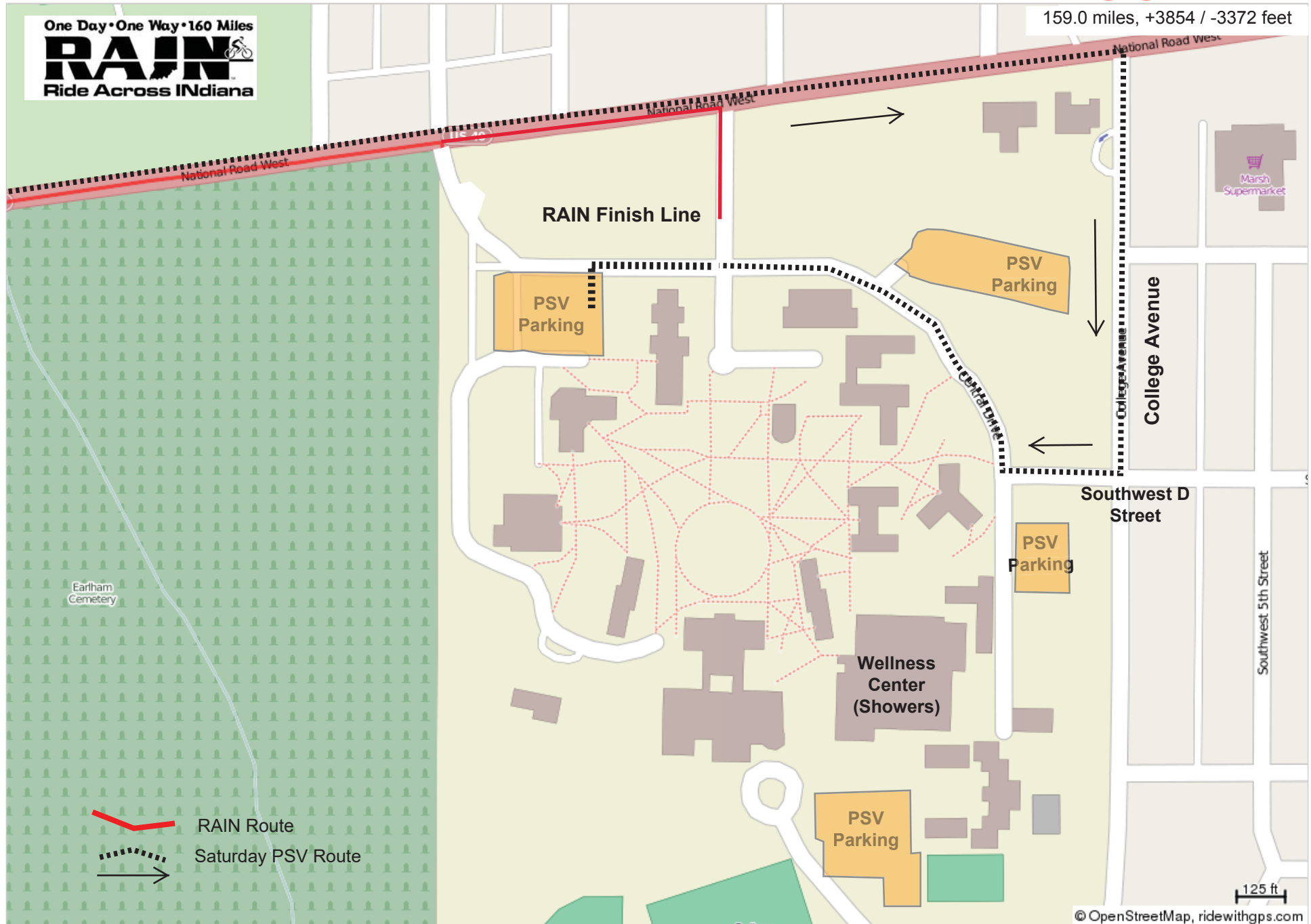
One Day • One Way • 160 Miles
RAIN
 Ride Across INdiana



RAIN 2024 - Finish Line PSV Route



159.0 miles, +3854 / -3372 feet



© OpenStreetMap, ridewithgps.com

[Return to PSV Guide](#)